

E20-822

EMC

CLARiiON Solutions Expert Exam for Storage Administrators

Visit: <http://www.pass4sureofficial.com/exams.asp?examcode=E20-822>

Pass4sureofficial.com is a reputable IT certification examination guide, study guides and audio exam provider, we not only ensure that you pass your E20-822 exam in first attempt, but also you can get a high score to acquire EMC certification.

If you use pass4sureofficial E20-822 Certification questions and answers, you will experience actual E20-822 exam questions/answers. We know exactly what is needed and have all the exam preparation material required to pass the exam. Our EMC exam prep covers over 95% of the questions and answers that may be appeared in your E20-822 exam. Every point from pass4sure E20-822 PDF, E20-822 review will help you take EMC E20-822 exam much easier and become EMC certified. All the Questions/Answers are taken from real exams.

Here's what you can expect from the Pass4sureOfficial EMC E20-822 course:

- * Up-to-Date EMC E20-822 questions taken from the real exam.
- * 100% correct EMC E20-822 answers you simply can't find in other E20-822 courses.
- * All of our tests are easy to download. Your file will be saved as a E20-822 PDF.
- * EMC E20-822 brain dump free content featuring the real E20-822 test questions.

EMC E20-822 certification exam is of core importance both in your Professional life and EMC certification path. With EMC certification you can get a good job easily in the market and get on your path for success. Professionals who passed EMC E20-822 exam training are an absolute favorite in the industry. You will pass EMC E20-822 certification test and career opportunities will be open for you.



Question: 1

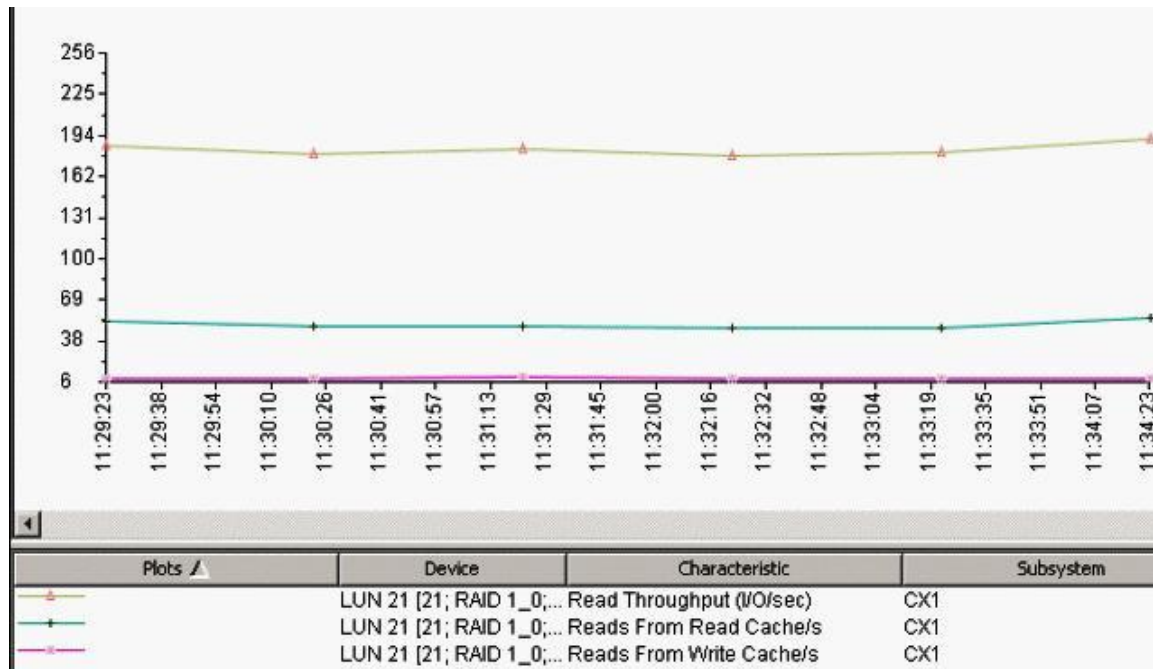
A customer runs its critical Oracle environment through a Fibre Channel connection to a CX3-40c. In order to leverage the existing iSCSI connections, management decides to allocate a small amount of storage to support several Windows file servers. The customer needs to make certain that the Oracle SLA is not impacted by the non-critical Windows file servers. Which solution do you recommend?

- A. Use Navisphere Quality of Service Manager to set limits on applications connected through iSCSI
- B. Change the write aside cache value for Windows LUNs
- C. Use Navisphere Service Taskbar to assign a higher SLA to the Oracle environment
- D. CX3-40c will automatically assign higher priority to FC connections over iSCSI

Answer: A

Question: 2

Click the Exhibit button.



The application using LUN 21 performs mainly 16 kB I/O operations. What is true of LUN 21?

- A. Read performance would improve if read cache was increased from 250 MB to 500 MB
- B. The application performs mainly read-modify-write-read operations
- C. The read cache hit ratio is above 50%
- D. The read I/O access pattern is largely random

Answer: D

Question: 3

You are a storage administrator who has been tasked with sizing a database LUN for an Exchange 2007 mailbox server. You have been provided with the following information regarding basic capacity requirements:

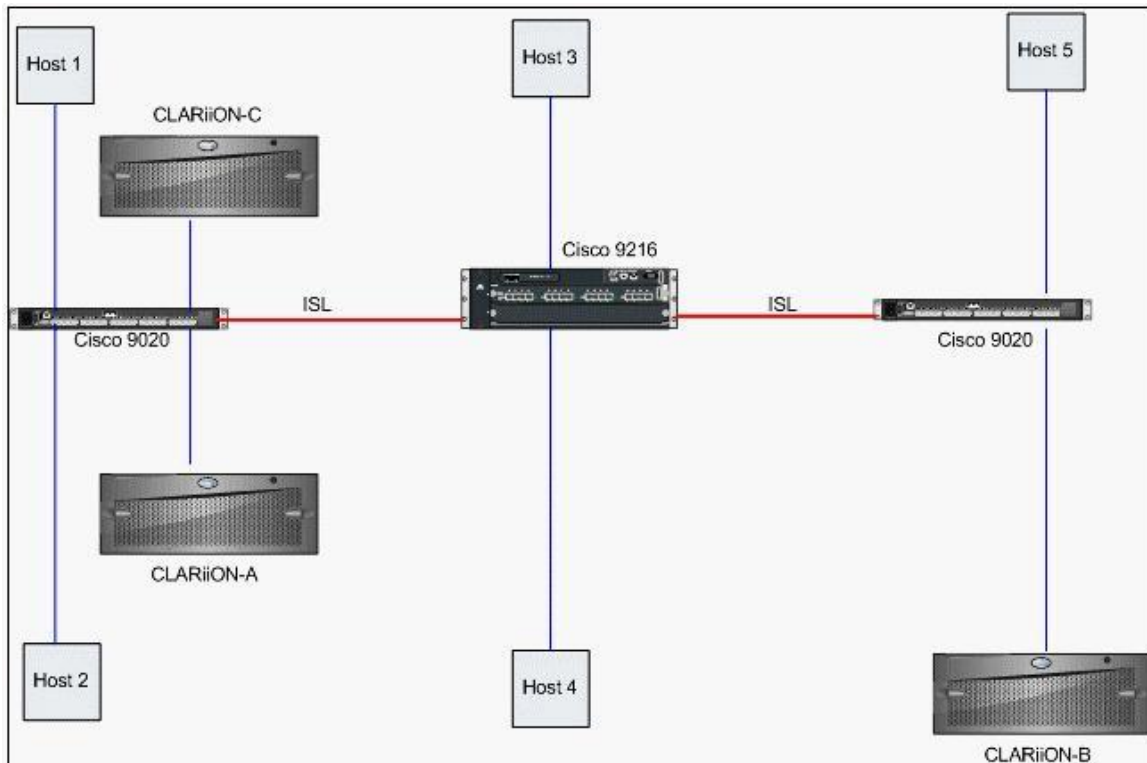
450 users
 200 MB mailbox size
 2.5 MB mail sent/day
 Deleted items retained for 14 days
 Deleted mailboxes retained for 30 days
 You have also been provided with additional information regarding usage and maintenance processes:
 Online maintenance takes 3 days to complete
 Approximately five mailboxes are deleted during an average month
 Content indexing will not be performed
 Offline maintenance will be performed on a separate LUN
 Which approximate LUN size will satisfy the listed requirements and still allow for 20% yearly growth?

- A. 145 GB
- B. 175 GB
- C. 355 GB
- D. 455 GB

Answer: B

Question: 4

Click the Exhibit button.



A customer is complaining that SAN Copy sessions from CLARiiON-A to CLARiiON-B take substantially longer than from those to CLARiiON-C. All hosts have 4 Gb/s HBAs. All Cisco equipment is base hardware configurations. Which component is causing the issue?

- A. 9020s
- B. 9216
- C. HBAs
- D. Hosts

Answer: B

Question: 5

A new CLARiiON arrives at a customer's site and an EMC Customer Engineer performs the physical installation. The storage administrator is under a lot of pressure to have the array online and in production by the end of the week. The storage administrator selects several Windows and Solaris servers for the initial production rollout. The storage requirements have been agreed upon and the storage administrator creates 30 LUNs of various sizes based upon EMC best practices.

The administrator works with the server team to install HBAs, update settings, install EMC software, and then perform the necessary cabling and zoning requirements. After the hosts successfully register with the CLARiiON array, the Windows and Solaris administrators state each server has 30 LUNs allocated.

What does the storage administrator need to accomplish to ensure each server has access to the appropriate LUNs?

- A. Create the appropriate storage groups
- B. Disable Access Logix
- C. Enable Access Logix
- D. Fix the incorrect zones

Answer: C

Question: 6

A customer has set up a disaster recovery site 50 miles (81 km) away from their production site. The customer is using MirrorView/S over IP with the Write Intent Log enabled. In addition, they have a dedicated 45 Mb/s line with a latency of 2 ms. During the testing of the automated solution for disaster recovery, an administrator accidentally disables the Write Intent Log. What is the likely outcome of this error if a secondary image becomes fractured?

- A. The fracture log will continue to maintain a log of changed blocks.
- B. The fracture log will continue to persistently maintain a log of changed blocks.
- C. The Write Intent Log will flush all records of changes.
- D. The Write Intent Log will hold change records up to the point where it was disabled.

Answer: A

Question: 7

Click the Exhibit button.

06:56:31 AM	0x71310008	CMID Transport Device 2: Gate 0 connects to SP ID 0x6fb320b060010650:0 (Signature 0x12b8bb)
06:56:31 AM	0x71310008	CMID Transport Device 2: Gate 0 connects to SP ID 0x6fb320b060010650:0 (Signature 0x12b8bb)
06:56:31 AM	0x71310007	CMID Transport Device 2: 1 gate(s) found. 00 00 04 00 03 00 4e 00 d3 04 00 00 07 00 31 61 07 00
05:21:10 AM	0x71050401	K10 50060160b020b36f became unreachable. 00 00 04 00 02 00 64 00 d3 04 00 00 01 04 05 61 01
05:21:10 AM	0x71100001	Lost contact with 6fb320b060010650:0 on conduit 7. 00 00 04 00 04 00 4c 00 d3 04 00 00 01 00 1
05:21:10 AM	0x71100001	Lost contact with 6fb320b060010650:0 on conduit 8. 00 00 04 00 04 00 4c 00 d3 04 00 00 01 00 1

Based on the exhibit, what happened between 05:21 A.M. and 06:56 A.M.?

Pass4SureOfficial.com Lifetime Membership Features;

- Pass4SureOfficial Lifetime Membership Package includes over **2500** Exams.
- **All** exams Questions and Answers are included in package.
- **All** Audio Guides are included **free** in package.
- **All** Study Guides are included **free** in package.
- **Lifetime** login access.
- Unlimited download, no account expiry, no hidden charges, just one time \$99 payment.
- **Free updates** for Lifetime.
- **Free Download Access** to All new exams added in future.
- Accurate answers with explanations (If applicable).
- Verified answers researched by industry experts.
- Study Material **updated** on regular basis.
- Questions, Answers and Study Guides are downloadable in **PDF** format.
- Audio Exams are downloadable in **MP3** format.
- **No authorization** code required to open exam.
- **Portable** anywhere.
- 100% success **Guarantee**.
- **Fast**, helpful support 24x7.

View list of All exams (Q&A) downloads

<http://www.pass4sureofficial.com/allexams.asp>

View list of All Study Guides (SG) downloads

<http://www.pass4sureofficial.com/study-guides.asp>

View list of All Audio Exams (AE) downloads

<http://www.pass4sureofficial.com/audio-exams.asp>

Download All Exams Samples

<http://www.pass4sureofficial.com/samples.asp>

To purchase \$99 Lifetime Full Access Membership click here

<http://www.pass4sureofficial.com/purchase.asp>

3COM	CompTIA	Filemaker	IBM	LPI	OMG	Sun
ADOBE	ComputerAssociates	Fortinet	IISFA	McAfee	Oracle	Sybase
APC	CWNP	Foundry	Intel	McData	PMI	Symantec
Apple	DELL	Fujitsu	ISACA	Microsoft	Polycom	TeraData
BEA	ECCouncil	GuidanceSoftware	ISC2	Mile2	RedHat	TIA
BICSI	EMC	HDI	ISEB	NetworkAppliance	Sair	Tibco
CheckPoint	Enterasys	Hitachi	ISM	Network-General	SASInstitute	TruSecure
Cisco	ExamExpress	HP	Juniper	Nokia	SCP	Veritas
Citrix	Exin	Huawei	Legato	Nortel	See-Beyond	Vmware
CIW	ExtremeNetworks	Hyperion	Lotus	Novell	SNIA	

