

70-683

Microsoft

TS: Windows 7, Preinstalling for OEMs

Visit: <http://www.pass4sureofficial.com/exams.asp?examcode=70-683>

Pass4sureofficial.com is a reputable IT certification examination guide, study guides and audio exam provider, we not only ensure that you pass your 70-683 exam in first attempt, but also you can get a high score to acquire Microsoft certification.

If you use pass4sureofficial 70-683 Certification questions and answers, you will experience actual 70-683 exam questions/answers. We know exactly what is needed and have all the exam preparation material required to pass the exam. Our Microsoft exam prep covers over 95% of the questions and answers that may be appeared in your 70-683 exam. Every point from pass4sure 70-683 PDF, 70-683 review will help you take Microsoft 70-683 exam much easier and become Microsoft certified. All the Questions/Answers are taken from real exams.

Here's what you can expect from the Pass4sureOfficial Microsoft 70-683 course:

- * Up-to-Date Microsoft 70-683 questions taken from the real exam.*
- * 100% correct Microsoft 70-683 answers you simply can't find in other 70-683 courses.*
- * All of our tests are easy to download. Your file will be saved as a 70-683 PDF.*
- * Microsoft 70-683 brain dump free content featuring the real 70-683 test questions.*

Microsoft 70-683 certification exam is of core importance both in your Professional life and Microsoft certification path. With Microsoft certification you can get a good job easily in the market and get on your path for success. Professionals who passed Microsoft 70-683 exam training are an absolute favorite in the industry. You will pass Microsoft 70-683 certification test and career opportunities will be open for you.



Exam Name:	TS. Windows 7, Preinstalling for OEMs		
Exam Type:	Microsoft		
Exam Code:	70-683	Total Questions:	75

Question: 1

You have a Windows 7 image. You mount the image, add additional files to the image, and then successfully unmount the image. You notice that the additional files are not in the image. You need to ensure that the additional files are saved in the image. What should you do?

- A. Run imagex.exe and specify the /mount parameter.
- B. Run imagex.exe and specify the /commit parameter.
- C. Run dism.exe and specify the /scratchdir parameter.
- D. Run dism.exe and specify the /cleanup-wim parameter.

Answer: B

Question: 2

You are preparing a Windows 7 image. You install several out-of-box drivers. You plan to generalize the image, and then deploy the image to computers that have the exact same hardware as the reference computer. You need to ensure that when the image is deployed, that hardware devices are not re-detected during the specialize configuration pass. What should you do before you generalize the computer?

- A. Set the driverpaths value in the oobe.xml file.
- B. Set the driverpaths value in the unattend. Xml file.
- C. Set the persistaldeviceinstalls value in the oobe.xml file.
- D. Set the persistaldeviceinstalls value in the Unattend. xml file.

Answer: D

Question: 3

You prepare a Windows 7 image. You need to ensure that the system clock is automatically set to the Central Time (UTC -6:00) time zone when the image is deployed. Your solution must prevent time zone customizations during Windows Welcome. What should you do?

- A. On the reference computer, modify the time zone. Generalize and capture the image.
- B. Generalize and capture the image. Create an oobe.xml file that specifies the time zone.
- C. Generalize and capture the image. Create a winpeshl.ini file that specifies the time zone.
- D. On the reference computer, run dism.exe and specify the /set-timezone parameter. Generalize and capture the image.

Answer: B

Question: 4

You deploy a generalized image of Windows 7 to a computer. You start the computer in audit mode. You need to ensure that Windows Welcome runs when you restart the computer. What should you do?

- A. Start the computer, and then press f12.
- B. Start the computer, and then press ctrl+shift+f3.
- C. Run sysprep.exe and specify the /oobe parameter.
- D. Run dism.exe and specify the /cleanup-image parameter.

Answer: C

Question: 5

You mount a Windows 7 image. You need to add a text file to the image. Which tool should you use?

Exam Name:	TS. Windows 7, Preinstalling for OEMs		
Exam Type:	Microsoft		
Exam Code:	70-683	Total Questions:	75

- A. Dism.exe
- B. Imagex.exe
- C. Windows explorer
- D. Windows system image manager

Answer: C

Question: 6

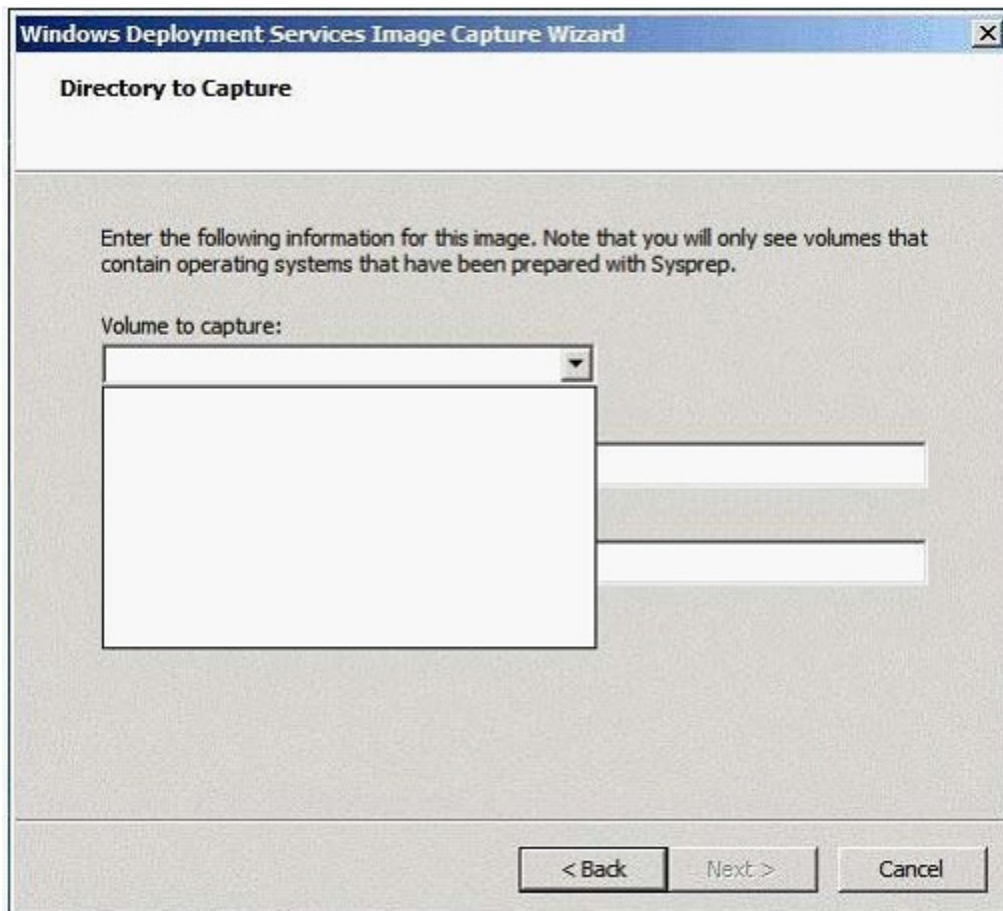
You deploy a generalized image on a computer. You need to start Windows 7 on the computer. Your solution must prevent Windows Welcome from completing. What should you do?

- A. Start the computer, and then press SHIFT+F10.
- B. Start the computer, and then press CTRL+SHIFT+F3.
- C. Start the computer from the Windows 7 installation media, and then select Repair computer.
- D. Start the computer from Windows PE, and then run Dism.exe and specify the /add-package parameter.

Answer: B

Question: 7

You attempt to capture an image to a Windows Deployment Services (WDS) server as shown in the exhibit. (Click the Exhibit button.) You need to capture the image to the WDS server. What should you do?



Exam Name:	TS. Windows 7, Preinstalling for OEMs		
Exam Type:	Microsoft		
Exam Code:	70-683	Total Questions:	75

- A. Start the reference computer from windows preinstallation environment (windows pe), and then run sysprep.exe /audit. Restart the computer by using pre-boot execution environment (pxe).
- B. Start the reference computer from windows preinstallation environment (windows pe), and then run sysprep.exe /generalize. Restart the computer by using pre-boot execution environment (pxe).
- C. Start windows 7 on the reference computer, and then run sysprep.exe /audit. Restart the computer by using pre-boot execution environment (pxe).
- D. Start windows 7 on the reference computer, and then run sysprep.exe /generalize. Restart the computer by using pre-boot execution Environment (PXE).

Answer: D

Question: 8

You have a computer that runs Windows 7. You start a capture of the computer to an image and get the following error message: The process cannot access the file because it is being used by another process. You need to create an image of the computer. What should you do before you capture the image?

- A. Disable the paging file.
- B. Stop the windows search service.
- C. Start the command prompt by using elevated privileges.
- D. Start the computer by using Windows Preinstallation Environment (Windows PE).

Answer: D

Question: 9

You have a Windows Image (WIM) file named Image.wim that contains a Windows 7 image. The default compression settings were used when creating the WIM file. You create a new image. You need to ensure that both images are stored by using maximum compression. What should you do?

- A. Append the new image to image.wim.
- B. Export the existing image, and then append the new image to image.wim.
- C. Run compact.exe and specify the /c parameter. Run dism.exe and specify the /remount-wim parameter.
- D. Run imagex.exe and specify the /mountrw parameter. Run dism.exe and specify the /cleanup-wim parameter.

Answer: B

Question: 10

You have Windows Image (WIM) file that contains an image of Windows 7. You plan to deploy the image to computers that have a third-party hardware component. The device driver for the hardware component can only be installed by using an executable provided by the hardware vendor. You need to ensure that the device driver is installed when you deploy the image. What should you do first?

- A. On a reference computer, run drvload. Exe.
- B. On a reference computer, run imagex.exe and specify the /apply parameter.
- C. On a technicians computer, run imagex.exe and specify the /mount parameter.
- D. On a technicians computer, run Dism.exe and specify the /add-driver parameter.

Answer: B

Pass4SureOfficial.com Lifetime Membership Features;

- Pass4SureOfficial Lifetime Membership Package includes over **2500** Exams.
- **All** exams Questions and Answers are included in package.
- **All** Audio Guides are included **free** in package.
- **All** Study Guides are included **free** in package.
- **Lifetime** login access.
- Unlimited download, no account expiry, no hidden charges, just one time \$99 payment.
- **Free updates** for Lifetime.
- **Free Download Access** to All new exams added in future.
- Accurate answers with explanations (If applicable).
- Verified answers researched by industry experts.
- Study Material **updated** on regular basis.
- Questions, Answers and Study Guides are downloadable in **PDF** format.
- Audio Exams are downloadable in **MP3** format.
- **No authorization** code required to open exam.
- **Portable** anywhere.
- 100% success **Guarantee**.
- **Fast**, helpful support 24x7.

View list of All exams (Q&A) downloads

<http://www.pass4sureofficial.com/allexams.asp>

View list of All Study Guides (SG) downloads

<http://www.pass4sureofficial.com/study-guides.asp>

View list of All Audio Exams (AE) downloads

<http://www.pass4sureofficial.com/audio-exams.asp>

Download All Exams Samples

<http://www.pass4sureofficial.com/samples.asp>

To purchase \$99 Lifetime Full Access Membership click here

<http://www.pass4sureofficial.com/purchase.asp>

3COM	CompTIA	Filemaker	IBM	LPI	OMG	Sun
ADOBE	ComputerAssociates	Fortinet	IISFA	McAfee	Oracle	Sybase
APC	CWNP	Foundry	Intel	McData	PMI	Symantec
Apple	DELL	Fujitsu	ISACA	Microsoft	Polycom	TeraData
BEA	ECCouncil	GuidanceSoftware	ISC2	Mile2	RedHat	TIA
BICSI	EMC	HDI	ISEB	NetworkAppliance	Sair	Tibco
CheckPoint	Enterasys	Hitachi	ISM	Network-General	SASInstitute	TruSecure
Cisco	ExamExpress	HP	Juniper	Nokia	SCP	Veritas
Citrix	Exin	Huawei	Legato	Nortel	See-Beyond	Vmware
CIW	ExtremeNetworks	Hyperion	Lotus	Novell	SNIA	

